

Fragmented Data Derails Enterprise AI

Praxie 



Praxie

NoSQLAI™

The AI Operations Software Platform

Operate at the speed of AI

The Problem of Unusable Data Everywhere

Data, Docs & Ad-hoc

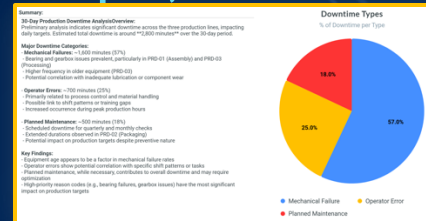


AI Powered Automation Framework

1. Access
Data, Docs & Ad-hoc



2. Analyze
Groups, Prioritizes,



Category	Summary	Action Plan
Human Error	Implement comprehensive hearing monitoring and predictive maintenance system to proactively identify and address potential hearing failures.	ADD TO ACTION PLAN
Mechanical	Implement comprehensive hearing monitoring and predictive maintenance system to proactively identify and address potential hearing failures.	ADD TO ACTION PLAN
Handling & Process Issues	Conduct thorough process analysis to identify areas for improvement. Develop clear SOPs for all critical processes. Implement comprehensive hearing programs for all operators.	ADD TO ACTION PLAN
Maintenance & Equipment	Implement comprehensive hearing monitoring and predictive maintenance system to proactively identify and address potential hearing failures.	ADD TO ACTION PLAN



3. Act
Runs Business

Improve Employee Sat, Absence Rate, Increase Sales

Production Work Order Status

Order #	Shift	Line	Product	Quantity	Date	Priority	Status	Duration	Actions
0001	Night	Line 1	Guard	9	27-Jul-2023	High	0. DRAFT	00:00:00	CONFIRM W/O
0002	First	Line 2	VALV	3	27-Jul-2023	High	1. CONFIRMED	00:00:00	START W/O
0003	First	Line 2	VALV	4	27-Jul-2023	High	1. CONFIRMED	00:00:00	CONFIRM W/O
0004	Second	Line 1	Guard	4	27-Jul-2023	High	2. IN PROGRESS	00:00:31	COMPLETE W/O
0005	First	Line 1	Guard	4	27-Jul-2023	High	2. IN PROGRESS	00:00:16	COMPLETE W/O

Gets Customers Running in a Few Weeks



From Siloed Data & Ad-hoc Process Gaps

Lean Apps	Production Apps	Quality Apps	Supply Apps	Innovation Apps	Strategy Apps
<ul style="list-style-type: none"> Huddles Audits Kaizen A3/8D/5Why SPC Tools SOPs VSM Gemba Training 	<ul style="list-style-type: none"> Scheduling OEE Work Orders Instructions PFMEA Balancing Escalations Maintenance AI Analysis 	<ul style="list-style-type: none"> TQM/QMS Root-Cause APQP Audits SOP ISO Planning Six Sigma Warranty AI Analysis 	<ul style="list-style-type: none"> Forecast Inventory Scorecards Materials SOPs Escalations RFP Training AI Analysis 	<ul style="list-style-type: none"> Culture Planning Ideation Portfolio Trends Competition Partnering Mentoring Training 	<ul style="list-style-type: none"> Trends Strategy Objectives KPIs OGSM OKRs Catch Ball AI Analysis Training
<ul style="list-style-type: none"> 40% Increase in speed 20% Waste & Cost Savings, 50% Better Visibility & Decisions 	<ul style="list-style-type: none"> 25% Higher Production Efficiency 20% Downtime Reduction 10% Cost Reduction 	<ul style="list-style-type: none"> 20% Lower Defects 15% Lower Cost of Quality 25% Better Compliance 	<ul style="list-style-type: none"> 30% Faster Inventory Turnover 15% Better Supplier Performance 10% Faster Order Fulfillment 	<ul style="list-style-type: none"> 15% Higher Revenue Growth 20% Improve Time to Market 10% Improved Customer Sat 	<ul style="list-style-type: none"> 35% Faster Decision Making 20% Better Operational Efficiency 10% Cost Reduction

Fragmented Data Derails Enterprise AI

Praxie 

70%

of the total project is
Data Cleansing & Prep
(InfoWorld)

Understanding Data Silos and Their Impact

The Problem: Data Silos in Modern Organizations

- Isolated data repositories controlled by single departments
- Incompatible systems that can't communicate with each other
- Legacy systems not designed for information sharing
- Decentralized IT purchasing creating disconnected technology
- Restricted access preventing cross-departmental collaboration

Business Impact:

- Reduced productivity and efficiency
- Impaired decision-making capabilities
- Higher technology costs
- Duplicated efforts and wasted resources
- Inconsistent data across teams

Data Cleansing in AI

Key Challenges

1. Inconsistent formatting across data sources
2. Missing values requiring imputation or exclusion decisions
3. Duplicate records that can skew model training
4. Outliers that may represent errors or important edge cases
5. Data type inconsistencies requiring standardization



Data Cleansing Steps

Data Profiling & Analysis

- Examine data structure, content, and quality
- Identify errors, inconsistencies, and anomalies
- Define data quality rules and standards

Data Standardization

- Transform data into consistent formats
- Apply formatting rules for dates, numbers, text
- Standardize naming conventions

Data Validation

- Check data against defined quality rules
- Verify data integrity and accuracy
- Identify violations of business rules

Error Correction

- Fix identified errors and inconsistencies
- Handle missing values through imputation techniques
- Correct inaccurate data entries

Data Deduplication

- Identify and remove duplicate records
- Match similar records using fuzzy matching
- Decide how to handle duplicates (merge, delete, etc.)

Data Enrichment

- Add missing information from external sources
- Enhance data with additional attributes
- Improve data completeness

Data Transformation

- Convert data to required target formats
- Apply business rules for data conversion
- Structure data for destination systems

Post-Processing & Verification

- Manual checking of automated corrections
- Final validation of cleansed data
- Spot-checking for quality assurance

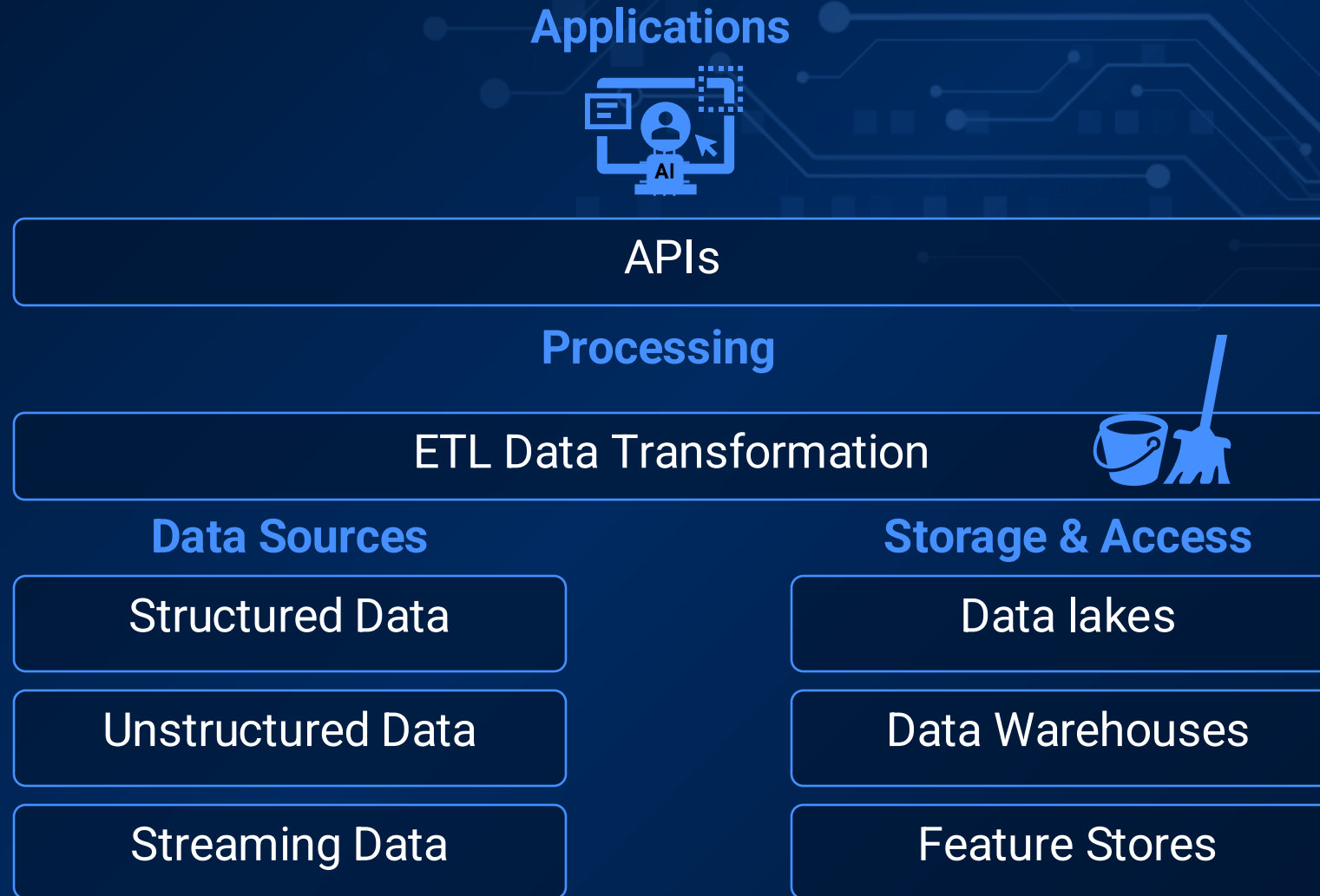
Data Auditing & Monitoring

- Track and document the cleansing process
- Measure data quality metrics
- Establish ongoing monitoring

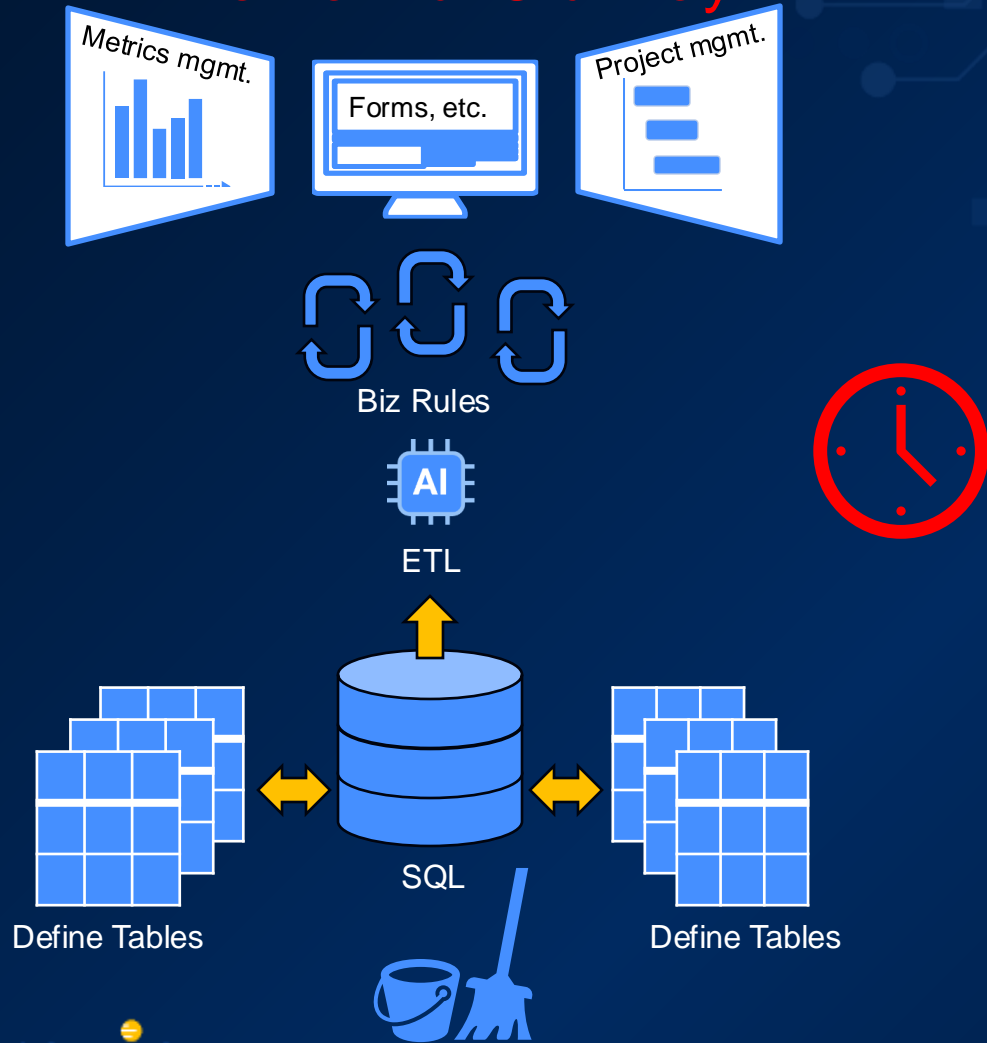
Implementation of Automated Pipelines

- Create reusable cleansing workflows
- Schedule recurring cleansing jobs
- Integrate with ETL processes

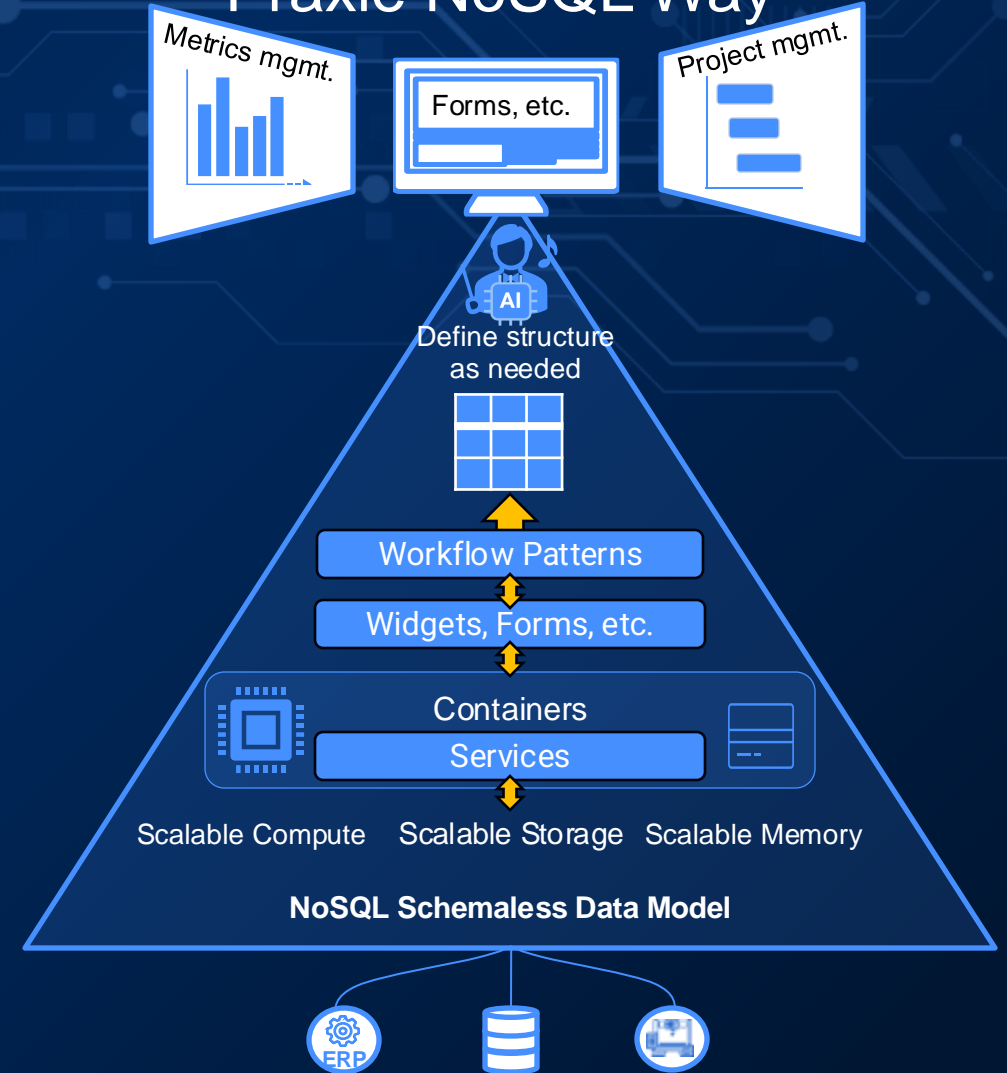
Data Integration Stack



The Painful Old Way



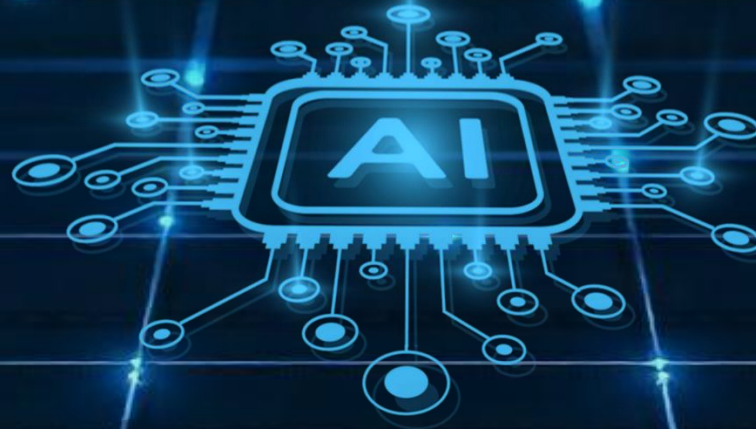
Praxie NoSQL Way



On a Unique AI-Powered Technology Stack



3. ACT: APPS BUILDER



2. ANALYZE: AGENTIC ORCHESTRATION AGENT



NoSQL**AI**[™]

Schemaless *Ingest*[™]

**1: ACCESS: Real-World DATA
ACQUISITION/INDEXING**

Praxie

Praxie Provides a Unified AI Strategy

Praxie



AI Command Center Layer

AI Analysis & Automation

Gap Apps: Lean, Tickets, NCR, Quality, 6 Sigma...



Execution Layer

ERP, PLM, MES, WM, QMS, CRM, etc.

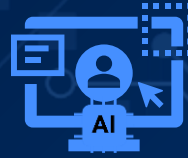


Data Layer

Data, Governance, Security

Supports Complementary Solutions at the Data layer

Applications



APIs

Processing

NoSQL Ingest



ETL Data Transformation

Data Sources

Structured Data

Unstructured Data

Streaming Data

Storage & Access

Data lakes

Data Warehouses

Feature Stores

AI Biz Intelligence & Data Science

AI Data Science Projects Deliver Insight Dashboards

DELIVERABLES



AI Analytic Dashboards
for Insights

USER EXPERIENCE TOOLS



Reporting
Templates

DATA & AI TOOLS



ETL Ingest
Transform

3rd Party Data Connectors
API, Webhook, SQL, MQTT, Office



AI Data
Cleaning



AI LLM
Orchestrator



AI Model
Training

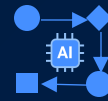


AI
Analysis Tools

Praxie AI

Praxie AI Reimagines Business Processes

DELIVERABLES



AI Monitoring &
Automations



AI Process
Gap Apps



Orchestration



AI Projects,
Actions & Alerts



AI Analytic Dashboards
for Insights & Actions

USER EXPERIENCE TOOLS



AI Biz Process
Designer



No-Code AI
Apps Builder



Library of Apps
& Templates



Project
Manager



AI Triggers &
Notifications

DATA & AI TOOLS



NoSQL Ingest

3rd Party Data Connectors
API, Webhook, SQL, MQTT, Office



AI LLM
Agent Orchestrator

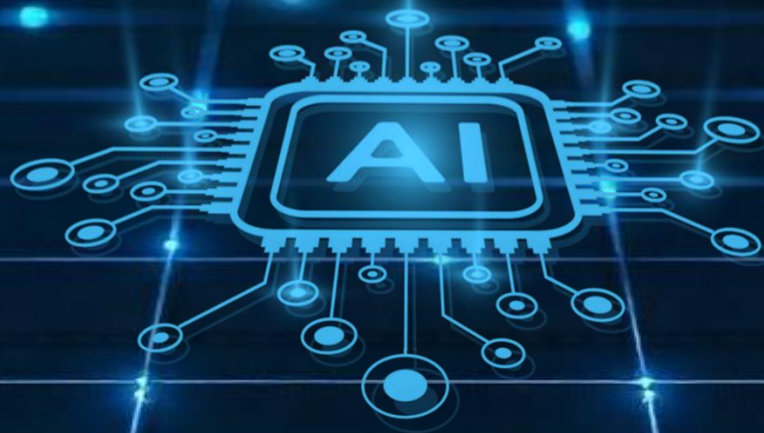


NoSQLAI™
Analysis Tools



Data Unification Example

Exploring techniques and benefits of
Data Integration



Role in Data Type Analysis

Information Extraction

Multi-Model – Databases, Document, images, Video, etc.

Content Classification

Automation assists in classifying document content accurately, ensuring quick access to relevant information when needed.

Speed and Efficiency

Automating document analysis processes minimizes manual labor and significantly speeds up overall analysis, saving time.

CONTACT



Praxie

Michael Lynch

Michael.Lynch@praxie.com



Free Mini-POC Offer!

Your Process – Our AI Platform!

One meeting and we'll prove a

“AI 5-10X Productivity Boost”